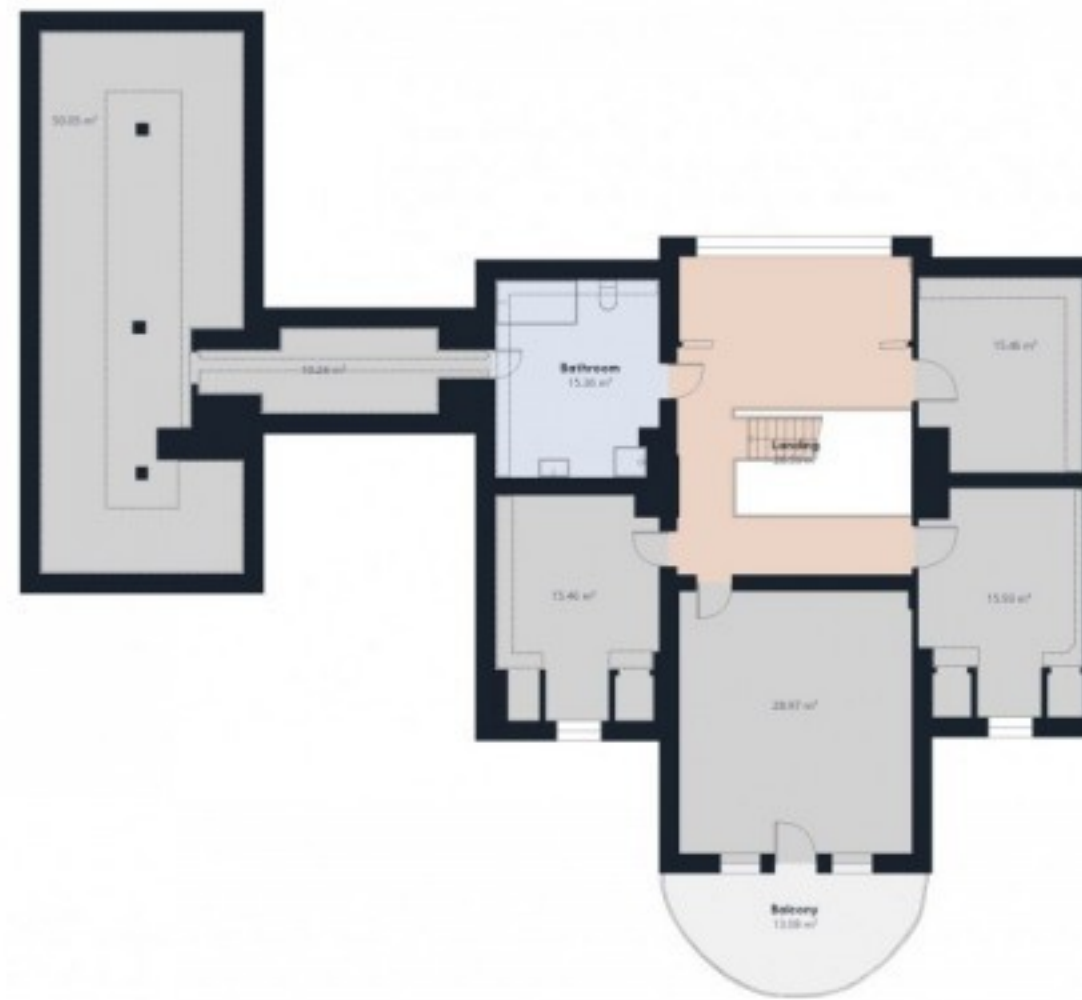




Floor 0 Building 1



Floor 2 Building 1



Floor 0 Building 2



Floor 0 Building 3

Approximate total area⁽¹⁾

403.17 m²

Reduced headroom

46.72 m²

(1) Excluding balconies and terraces

☐ Reduced headroom
(below 1.5m/4.92ft)

While every attempt has been made to ensure accuracy, all measurements are approximate, not to scale. This floor plan is for illustrative purposes only.

GIRAFFE 360