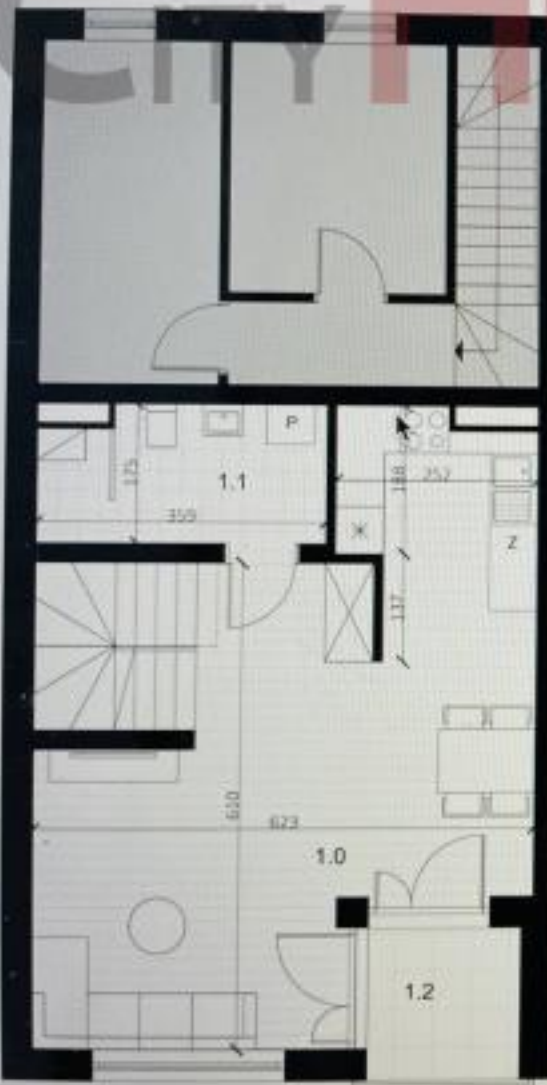


LOKAL II

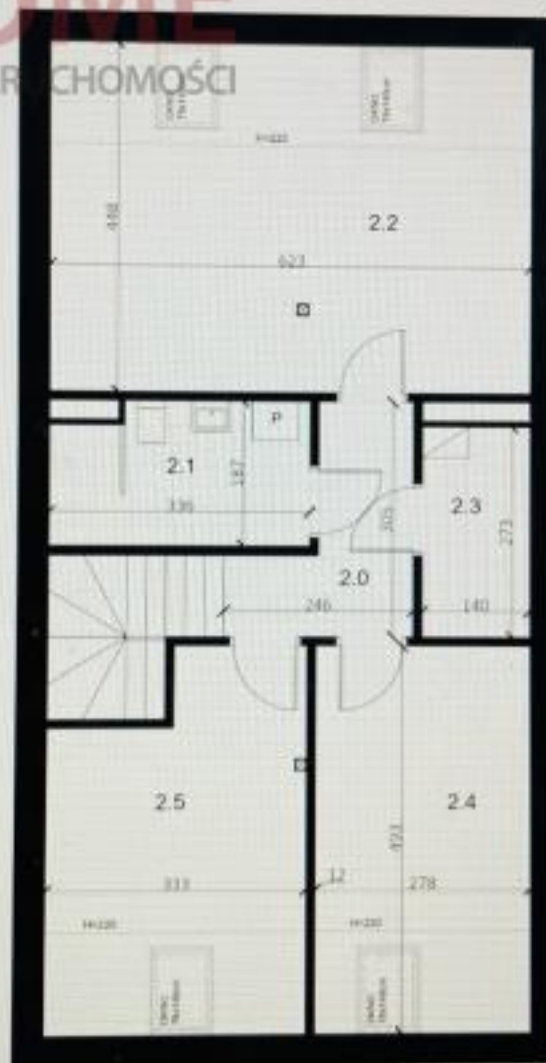
BUDYNEK 2, 3, 4, 5, 6

PARTER + PIĘTRO + PODDASZE

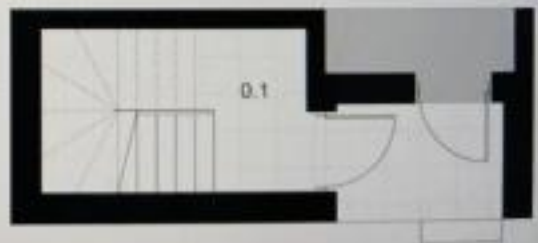
0.1 PRZEDSIÓNEK	3.48
1.0 SALON + ANEKS KUCHENNY	32.51
1.1 ŁAZIENKA	5.79
2.0 HOL	4.54
2.1 ŁAZIENKA	5.78
2.2 POKÓJ 1	23.62
2.3 POM. GOSPODARCZE	3.68
2.4 POKÓJ 2	11.50
2.5 POKÓJ 3	12.52
RAZEM LOKAL	103.72
1.2 LOGGIA	3.61



PIĘTRO



PODDASZE



PARTER